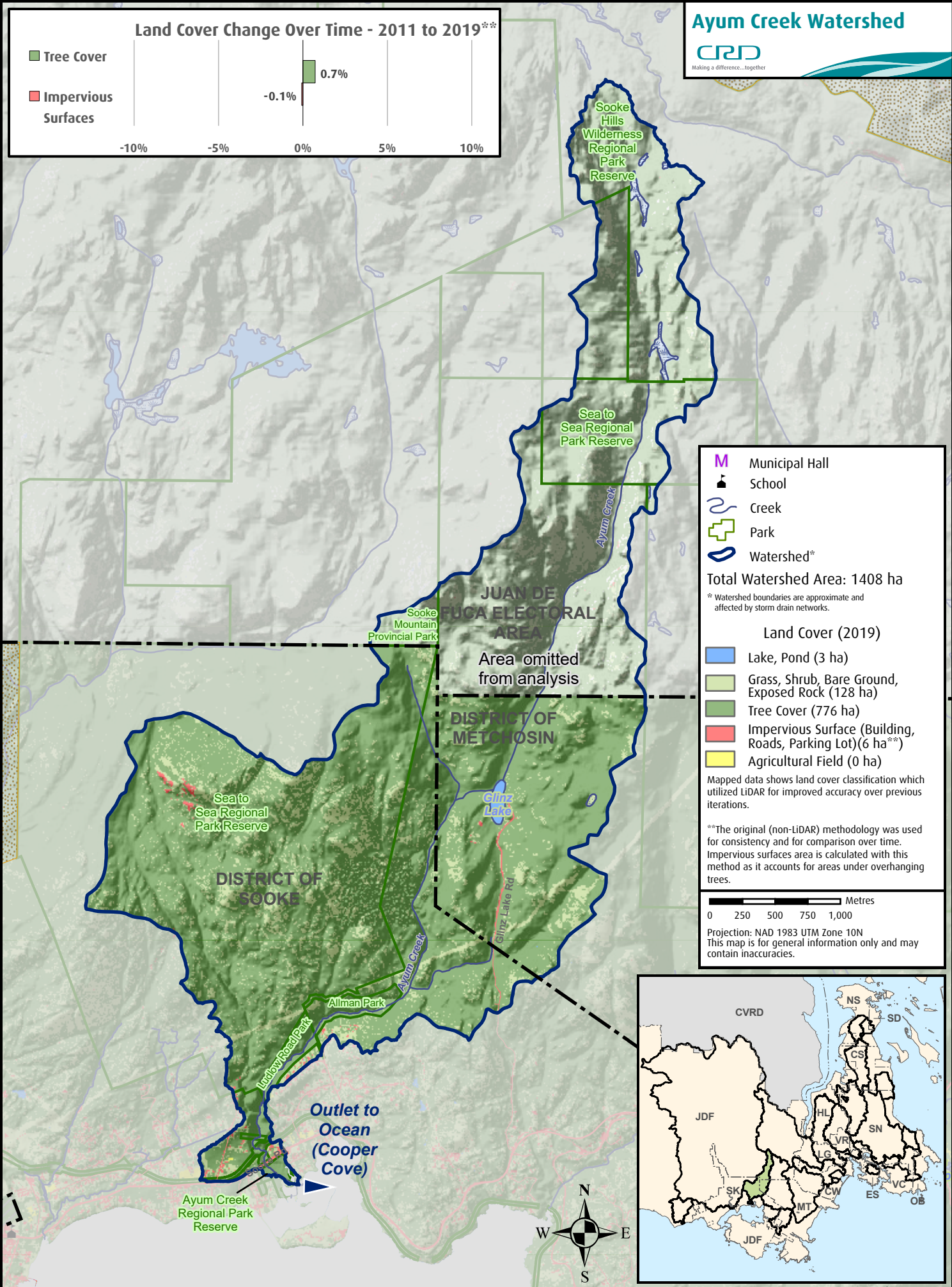
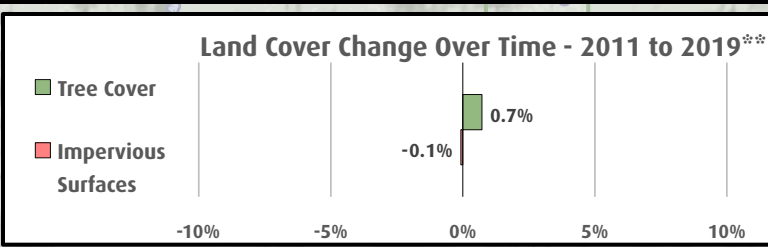


# Ayum Creek Watershed



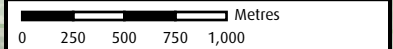
- Municipal Hall
- School
- Creek
- Park
- Watershed\*

Total Watershed Area: 1408 ha  
 \* Watershed boundaries are approximate and affected by storm drain networks.

- #### Land Cover (2019)
- Lake, Pond (3 ha)
  - Grass, Shrub, Bare Ground, Exposed Rock (128 ha)
  - Tree Cover (776 ha)
  - Impervious Surface (Building, Roads, Parking Lot) (6 ha\*\*)
  - Agricultural Field (0 ha)

Mapped data shows land cover classification which utilized LiDAR for improved accuracy over previous iterations.

\*\*The original (non-LiDAR) methodology was used for consistency and for comparison over time. Impervious surfaces area is calculated with this method as it accounts for areas under overhanging trees.



Projection: NAD 1983 UTM Zone 10N  
 This map is for general information only and may contain inaccuracies.

