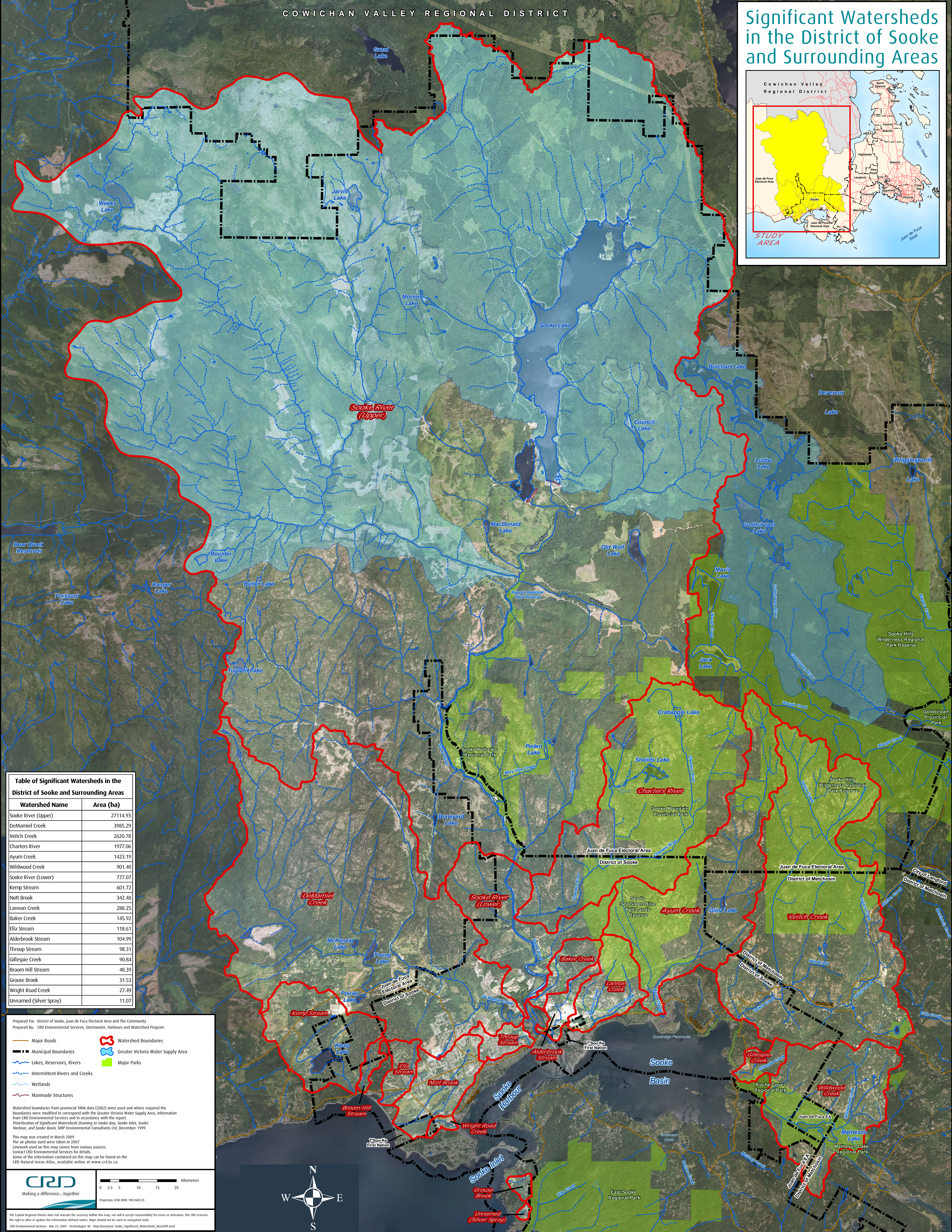


# Significant Watersheds in the District of Sooke and Surrounding Areas



**Table of Significant Watersheds in the District of Sooke and Surrounding Areas**

Watershed Name	Area (ha)
Sooke River (Upper)	27114.93
DeMamiel Creek	3985.29
Veitch Creek	2620.78
Charters River	1977.06
Ayum Creek	1423.19
Wildwood Creek	901.40
Sooke River (Lower)	777.07
Kemp Stream	601.72
Nott Brook	342.48
Lannon Creek	288.25
Baker Creek	145.92
Ella Stream	118.61
Alderbrook Stream	104.99
Thrup Stream	98.31
Gillespie Creek	90.84
Broom Hill Stream	48.39
Grouse Brook	31.53
Wright Road Creek	27.49
Unnamed (Silver Spray)	11.07

Prepared for: District of Sooke, Juan de Fuca Electoral Area and the Community  
 Prepared by: CRD Environmental Services, Stormwater, Harbours and Watershed Program

- Major Roads
- Watershed Boundaries
- Municipal Boundaries
- Greater Victoria Water Supply Area
- Lakes, Reservoirs, Rivers
- Major Parks
- Intermittent Rivers and Creeks
- Wetlands
- Manmade Structures

Watershed boundaries from provincial TRIM data (2002) were used and where required the boundaries were modified to correspond with the Greater Victoria Water Supply Area, information from CRD Environmental Services and in accordance with the report, 'Prioritization of Significant Watersheds Draining to Sooke Bay, Sooke Inlet, Sooke Harbour, and Sooke Basin, SHP Environmental Consultants Ltd, December 1999.'

This map was created in March 2009  
 The air photos used were taken in 2007  
 Line work used on this map comes from various sources.  
 Contact CRD Environmental Services for details.  
 Some of the information contained on this map can be found on the CRD Natural Areas Atlas, available online at [www.crd.bc.ca](http://www.crd.bc.ca).

0 2.5 5 10 15 20 Kilometers  
 Projection: UTM ZONE 10N NAD 83

The Capital Regional District does not warrant the accuracy within this map, nor will it accept responsibility for errors or omissions. The CRD reserves the right to alter or update the information without notice. Maps should not be used as navigation tools.  
 CRD Environmental Services - Mar 25, 2009 - Technologist, SR - Map Document: Sooke\_Significant\_Watersheds\_Mar2009.mxd