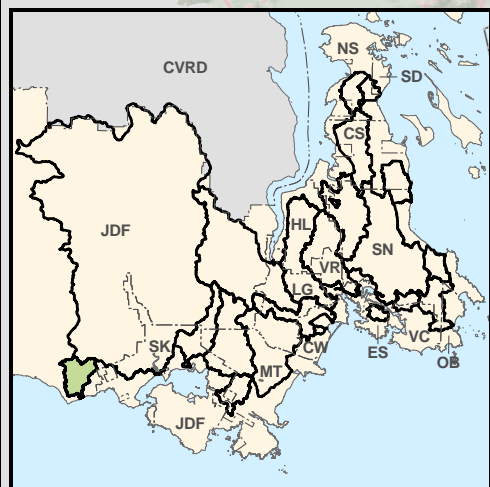
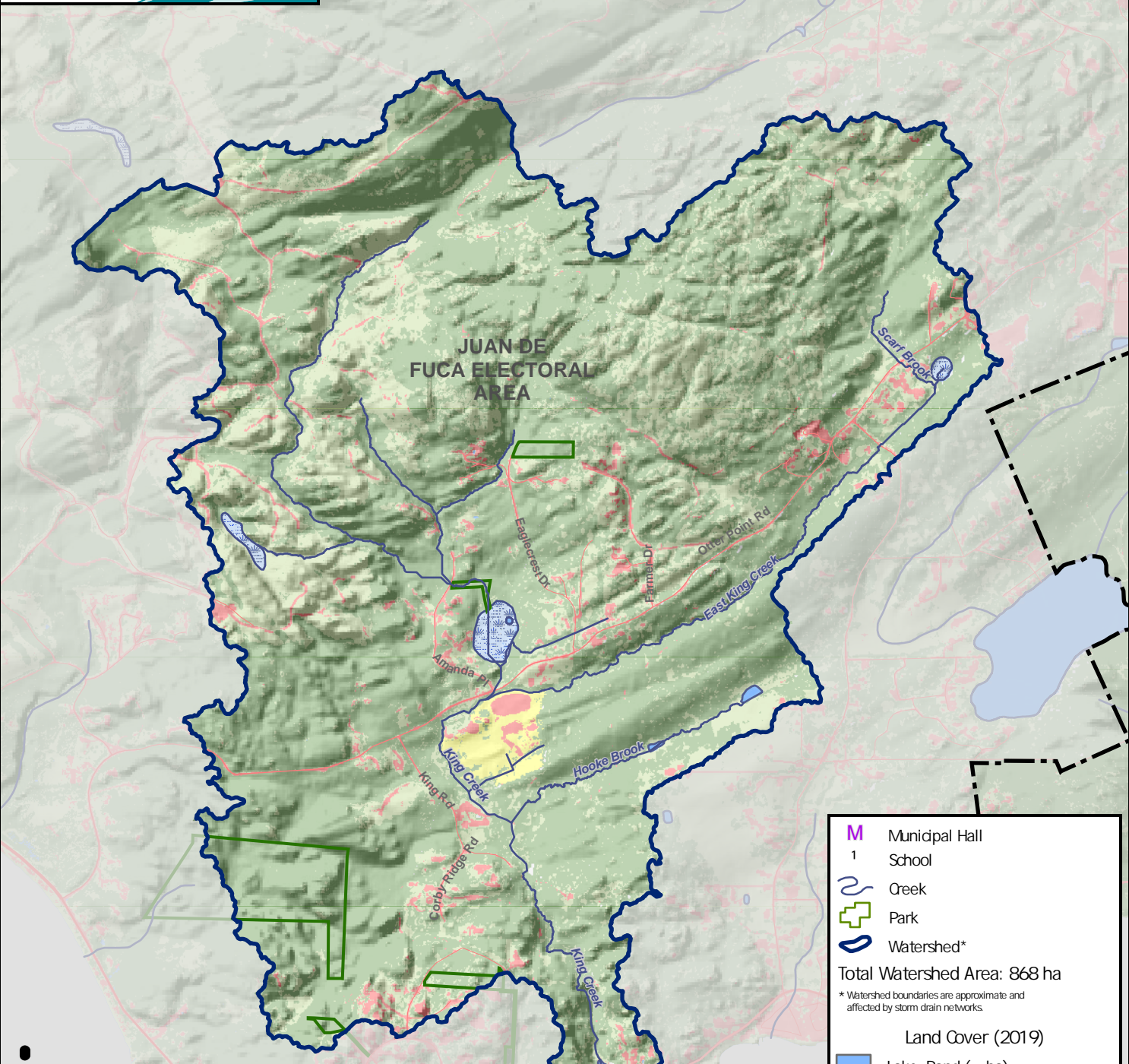


King Creek Watershed



**Outlet to Ocean
(Juan de Fuca Strait)**

	Municipal Hall
	School
	Creek
	Park
	Watershed*

Total Watershed Area: 868 ha

* Watershed boundaries are approximate and affected by storm drain networks.

Land Cover (2019)

	Lake, Pond (-- ha)
	Grass, Shrub, Bare Ground, Exposed Rock (-- ha)
	Tree Cover (-- ha)
	Impervious Surface (Building, Roads, Parking Lot) (-- ha)**
	Agricultural Field (-- ha)

Mapped data shows land cover classification which utilized LIDAR for improved accuracy over previous iterations.

**The original (non-LIDAR) methodology was used for consistency and for comparison over time. Impervious surfaces area is calculated with this method as it accounts for areas under overhanging trees.

0 200 400 600 800 Metres

Projection: NAD 1983 UTM Zone 10N
This map is for general information only and may contain inaccuracies.